

**Tillbridge Solar Project
EN010142**

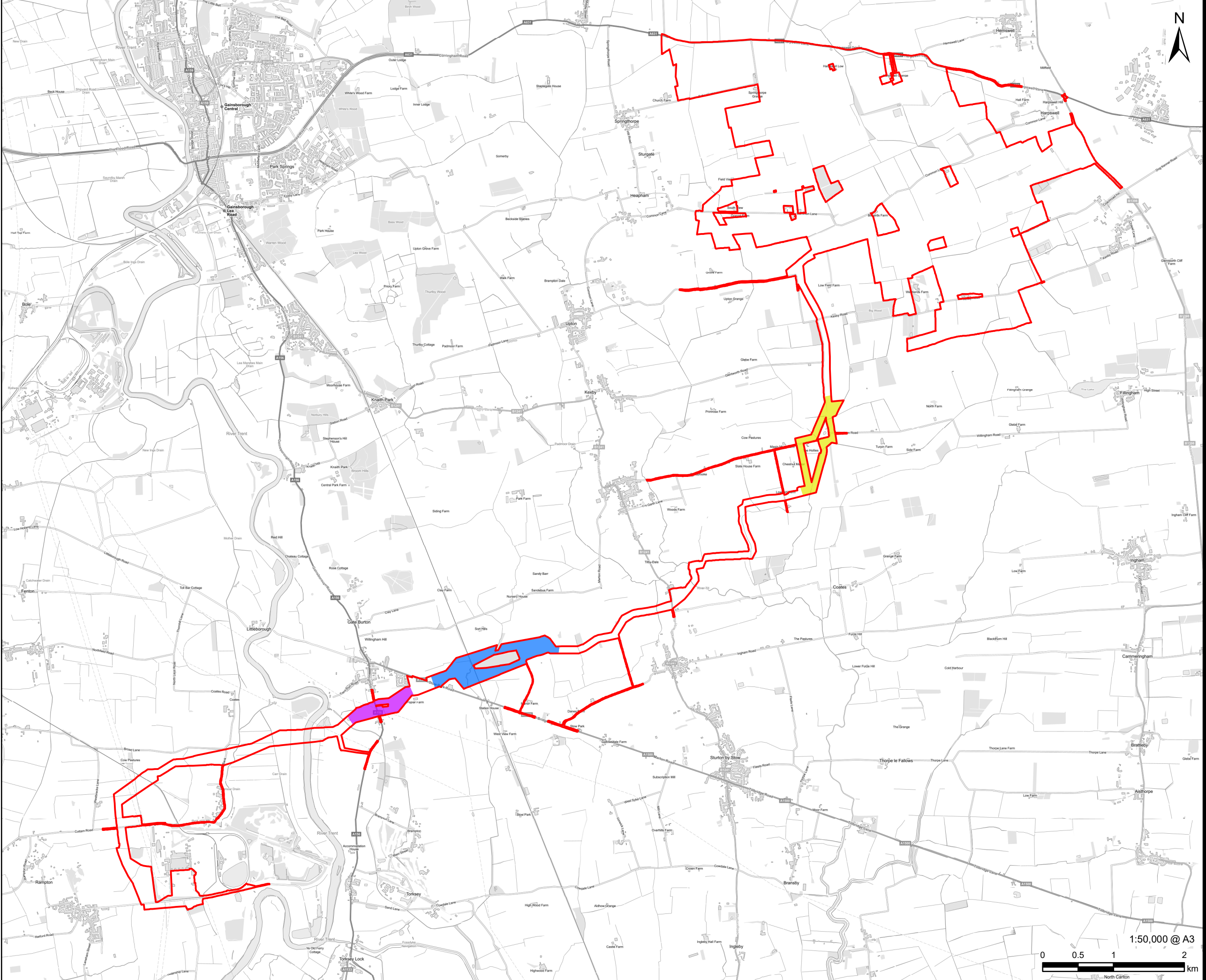
**Volume 6
Environmental Statement
Figure 4-7: Areas of Retained Optionality
within the Cable Route Corridor
Document Reference: EN010142/APP/6.3**

**Regulation 5(2)(a)
Infrastructure Planning (Applications: Prescribed Forms and
Procedure) Regulations 2009**

**April 2024
Revision Number: 00**

tillbridgesolar.com

Revision: 0 Drawn: LL Checked: CR Approved: CW Date: 2024-03-12
Filename: I:\na.aecomnet.com\fs\EMEALondon-UK\LON06\Legacy\UKLON06\PPSW001-V1\DP\Library\GIS_DATA\Projects\Greta III\Layout\Tillbridge Solar\ES\Chapter 4 - Design Evolution\240312_TillbridgeSolar_Alternatives_Figure4-7_Optionality.mxd



PROJECT
Tillbridge Solar Project

CLIENT
Tillbridge Solar Ltd

CONSULTANT
Aldgate Tower
2, Leman Street
London, E1 8FA
United Kingdom
T +44-0207-645-2000

LEGEND

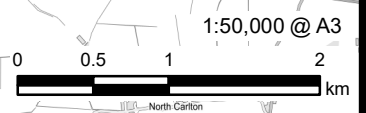
- Order limits
- Location of Two Potential Routes
 - East of Marton
 - East of Willingham-by-Stow
 - South of Marton

NOTES
Contains Ordnance Survey Data © Crown Copyright and database right 2024.
© Crown copyright and database rights 2024.
Ordnance Survey 0100031673.

ISSUE PURPOSE
DCO Submission
PROJECT NUMBER
60677969

FIGURE TITLE
Areas of retained optionality within the Cable Route Corridor

FIGURE NUMBER
Figure 4-7



The drawing has been prepared for the use of AECOM's client. It may not be used, modified, reproduced or relied upon by third parties, except as agreed by AECOM or as required by law. AECOM accepts no responsibility, and denies any liability whatsoever, to any party that uses or relies on this drawing without AECOM's express written consent. Do not scale this document. All measurements must be obtained from the stated dimensions.